

version

2

KEY CODE ACCESS (8 WAY)

12 VOLT DC INPUT SUPPLY

KCA1 KEY CODE ACCESS

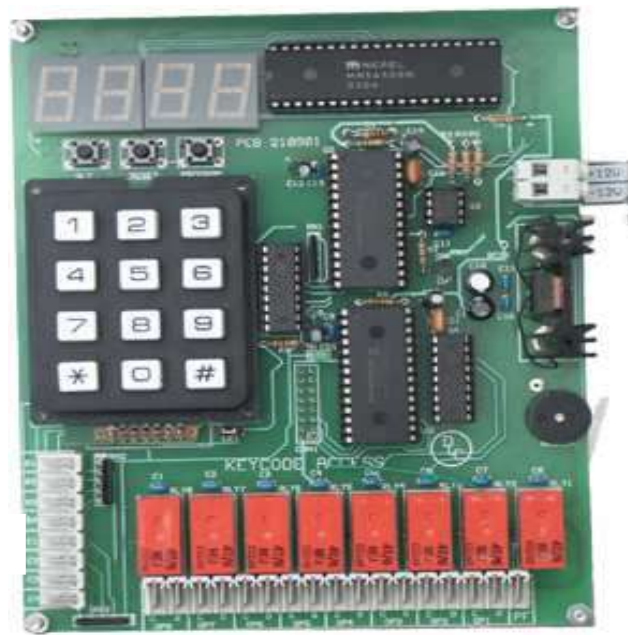
The KCA1 has been designed to be installed on top of the lift car .The stainless steel keypad is installed in the lift car. Eight individual codes can be stored each code will energize one of the eight relays. These relays can be configured to block a bank of buttons or individual buttons. The keypad in the unit on top of the car is used for programming and re-programming the access codes. There is a display in the unit that will display the code you are entering and its location to one of the relays. The output relays can be programmed to be energized for a few seconds after a code has been entered. This can be used to put a call in directly or liven the appropriate push. The relays can also be configured to be energized by the correct code and de-energized by entering the same code again.

KEY PAD

The stainless steel keypad is vandal resistant and IP rated. This keypad is supplied as in the picture. The unit can be mounted into a car operating panel or a stainless steel face plate whereby it can be fitted to existing lift installations.

Programming Instructions

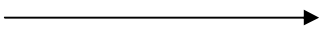
1. Hold down the reset and program button on the pcb momentarily. Release the reset button then the program button. The display will show **(prog)**.
2. Press # key until the display reads (d0o1). When **(d0o1)** Is displayed press # again which will display the access code for output one on the decoder (FACTORY SET TO 1111)
3. To change code press the 'A' button on the pcb then enter a new four digit code, the display will flash **(d0o1)**.
4. Press the # key and the new code will be displayed.
5. Press the # key again the display will show **(d0o2)**
6. Press # again and the code for output two on the decoder is displayed (Factory set to d0o2) to alter this go to step 5 and repeat.
7. To exit program mode at any time press `*` key.



PROGRAMMING BUTTONS

12 VOLT DC INPUT

TO KEYPAD IN LIFT CAR



8 RELAY OUTPUTS C=CLOSED O=OPEN CONTACT PF = PUSH FEED